



GLASS



METAL



PLASTICS



BEVERAGE & FOOD CARTONS



FOOD WASTE



RESIDUAL WASTE



PAPER



CARDBOARD



TEXTILE WASTE



HAZARDOUS WASTE

Your guide

Making waste sorting easy



Do you need assistance?
Find out more at kredsløb.dk/sortering



Get ready to start sorting even more of your waste

You have already started to sort your waste, and so far you have been very good at it. Sorting your waste is a way that you can help the environment on an everyday basis.

When your sorted plastic waste can be used to make new packaging and your out-of-date magazines are used to make newspapers or kitchen rolls; it all makes a difference. You are helping to save the world's natural resources and to protect our environment.

The time has now come to sort even more of our waste. This will require you to change some of your existing habits. Going forward, it will become a natural part of your everyday routines to sort your food waste, soft plastics, textile waste, hazardous waste and beverage & food cartons.

It is your own responsibility to sort your waste and hand in any waste that you are unable to sort at home at your local recycling station.

In return, we will make sure that your waste is properly managed, so that it can be reused over and over again, for as long as possible.

This is how we can all make a greener difference.

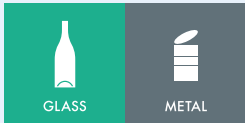


We run on green fuel too

Our new waste collection trucks run on either electricity or bio fuels. They are split into compartments to ensure that the waste from the various compartments in your bins does not get mixed up.

Waste that should be combined

When configuring your own home waste sorting system, bear in mind that these types of waste should be left for collection together.



Glass and metal



Plastics and Beverage & Food cartons



Paper, cardboard and textile waste

Waste that should be handed in separately:



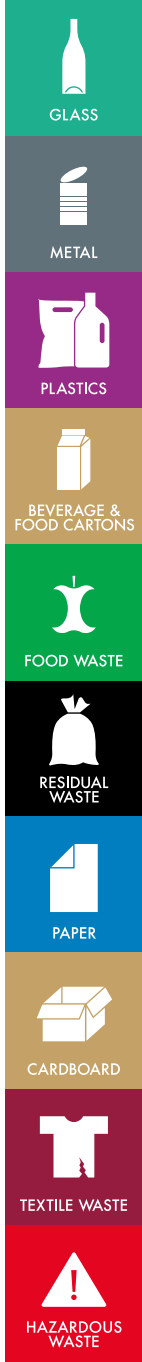
Food waste



Residual waste



Hazardous waste





Glass



+ Yes

- + Non-deposit bottles
- + Glass jars
- + Drinking glasses
- + Vitamin bottles
- + Pieces of glass

÷ No

- ÷ Ceramics
- ÷ Crystal glass
- ÷ Mirrors
- ÷ Fireproof glass
- ÷ Porcelain

Without caps,
empty
and scraped
clean



GLASS



METAL



Metal



+ Yes

- + Food tins
- + Metal caps
- + Foil trays
- + Drink cans

÷ No

- ÷ Spray cans
- ÷ Metal with electronic parts
- ÷ Pressurised bottles/canisters
- ÷ Large metal items
- ÷ Gas cylinders
- ÷ Metal with chemical coatings/residue

Empty
and scraped
clean



Plastics



+ Yes

- + Plastic trays
- + Plastic bottles
- + Plastic tubs
- + Plastic bags
- + Plastic film
- + Bubble wrap
- + Plastic lid

÷ No

- ÷ Tarpaulins
- ÷ Inflatable pools
- ÷ Motor oil tubs
- ÷ Polystyrene
- ÷ Rubber boots

Empty
and scraped
clean



Beverage & Food cartons



PLASTICS



BEVERAGE & FOOD CARTONS



+ Yes

- + Milk cartons
- + Yoghurt cartons
- + Juice cartons
- + Food cartons (E.g. peeled tomatoes, beans or similar)

÷ No

- ÷ Food tins
- ÷ Pizza boxes
- ÷ Dry cardboard
- ÷ Cardboard takeaway boxes
- ÷ To-go cups
- ÷ Chip bags
- ÷ Coffee bags

Empty and pressed flat

Food waste



+ Yes

- + Expired food
- + Coffee grinds and coffee filters
- + Eggshells
- + Small bones
- + Old floral bouquets
- + Tea bags

÷ No

- ÷ Soil
- ÷ Garden waste
- ÷ Houseplant with soil
- ÷ Baking paper
- ÷ Cupcake liners

Remember to
tie a knot
in your waste
sack



Residual waste



+ Yes

- + Pizza boxes
- + Ash and cigarette stubs
- + Hygiene waste
- + Empty tubes
- + Vacuum cleaner bags
- + Baking paper

÷ No

- ÷ Batteries
- ÷ Electronic items
- ÷ Chemicals
- ÷ Spray cans
- ÷ Electric light bulbs
- ÷ Pressurised bottles/canisters

Remember to
tie a knot
in your waste
sack



FOOD WASTE



RESIDUAL
WASTE



Paper



Cardboard



+ Yes

- + Newspapers
- + Advertisements
- + Office paper
- + Envelopes
- + Paper bags
- + Cardboard boxes
- + Cardboard tubes
- + Cardboard trays
- + Egg boxes

÷ No

- ÷ Books
- ÷ Baking paper
- ÷ Ring binders
- ÷ Wet and/or dirty cardboard
- ÷ Polystyrene
- ÷ Pizza boxes
- ÷ Plastic-laminated cardboard

Clean and dry

Clean and dry

Textile waste



+ Yes

- + Damaged clothing
- + Bedding and bed linen with holes
- + Towels, tea towels and cloths with dried spots from food or wine

÷ No

- ÷ Duvets and pillows
- ÷ Wet, damp and mouldy textiles
- ÷ Rugs and carpets
- ÷ Shoes, bags and belts
- ÷ Stuffed animals
- ÷ Leather goods
- ÷ Rainwear
- ÷ Textiles with residues of oil, paint or similar

Use
transparent
bags

Tie a knot
in your waste
sack

Only dry
textile waste



PAPER



CARDBOARD



TEXTILE WASTE



Hazardous waste



+ Yes

- + Spray cans
- + Chemical bottles
- + Left-over paint
- + Small electronic items
- + Light bulbs (in plastic bags)
- + Batteries (in plastic bags)

÷ No

- ÷ Fireworks
- ÷ Ammunition
- ÷ Left-over medicine
- ÷ Gas canisters

Chemicals
must be left in
their original
packaging.



How to use the bags/sacks

We will give you some bags/sacks to get you started. Once you have used them all, you will need to buy your own waste sacks/bags. You can use whatever kind you prefer. Remember that textiles should be in transparent sacks.

Put out for collection
in tied bags.

Leave for collection
loose
- must NOT be left
in bags

Prick a hole in the sack so that air can escape. This is to prevent the sack from popping open in the waste collection truck.

It is up to you whether you leave your waste for collection in untied bags/sacks or loose.



How your waste is transformed into new products

Recycling existing materials helps us to save the Earth's resources while also using less energy to make new products. Increasing the amount of waste that you sort makes a difference, so we manage your waste in such a manner that allows as many materials as possible to be used again. This is good for the environment and good for everybody.

Hard and soft plastics are sorted, cleaned and melted into small plastic pellets that can be used to make products like garden furniture, shampoo bottles, meat packaging trays, plastic packaging and other plastic products.



Textile waste is shredded into fibres that can be used to make new clothes, carpets, acoustic dampers and to fill cushions.



Food waste is turned into biogas and agricultural fertilisers. This helps to return important nutrients to the natural cycle.



Glass is sorted by colour and size. Large pieces of glass can be turned into new glass.

Making new glass from sand consumes seven times more energy than reusing old glass.



Hazardous waste is transported to sorting plants and then on to different types of processing plants where environmentally harmful substances can be removed and any reusable raw materials extracted for use in new products.

Your **residual waste** is taken to a waste energy plant for incineration to produce energy in the form of electricity and district heating.



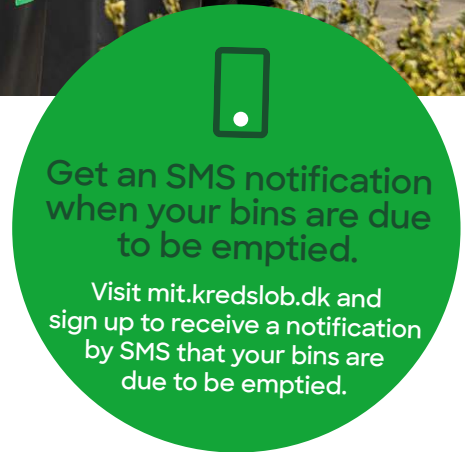
Empty **beverage and food cartons** is dissolved, then cardboard from is used for making cardboard boxes and cardboard packaging.

Metal is sorted by type, such as iron and aluminium. Each type of metal is melted down and turned into base metal that can be used to make products such as car parts and construction materials. Did you know that aluminium can be melted down and reused an infinite number of times?

Cardboard and paper are sorted so they can be used separately. White paper can be turned into new white paper. Cardboard and mixtures of cardboard and paper can be turned into cardboard boxes and packaging. Recycling paper helps us to save water, energy, chemicals and cellulose wood fibres.



If you have your own waste bins



Get an SMS notification when your bins are due to be emptied.

Visit mit.kredslob.dk and sign up to receive a notification by SMS that your bins are due to be emptied.

Most houses will be provided with three outdoor waste bins, with a total of five compartments. One for glass and metal, one for paper, cardboard and textiles, one for plastics, beverage & food cartons, one for food waste and one for residual waste.

If you own the home where you live, you can change the size and quantity of your bins at mit.kredslob.dk



Hazardous home waste

You will also receive a red box for all your hazardous home waste. Please check page 12 to see what you are allowed to put in it. The red box will be emptied when the need arises. When the box is full, put it out on top of or beside one of the other bins. It will then be exchanged for an empty one.

Only put the red box out with the other bins when it needs emptying.

Find out how to use the red box at kredslob.dk/nybeholder

How to place your waste bins

The standard solution for a single household is three waste bins, each with a capacity of 240 litres.

There must be at least a 10 cm gap from the side of each bin.

This means that you must allow a space of at least 220 cm for your bins.

It must also be easy for the waste collection personnel to empty your bins. The path from the waste collection truck to your bins must therefore satisfy various requirements.

The surface must be firm, with free space around the bin and no steps.

You can view all the various requirements at kredslob.dk/adgangsvej

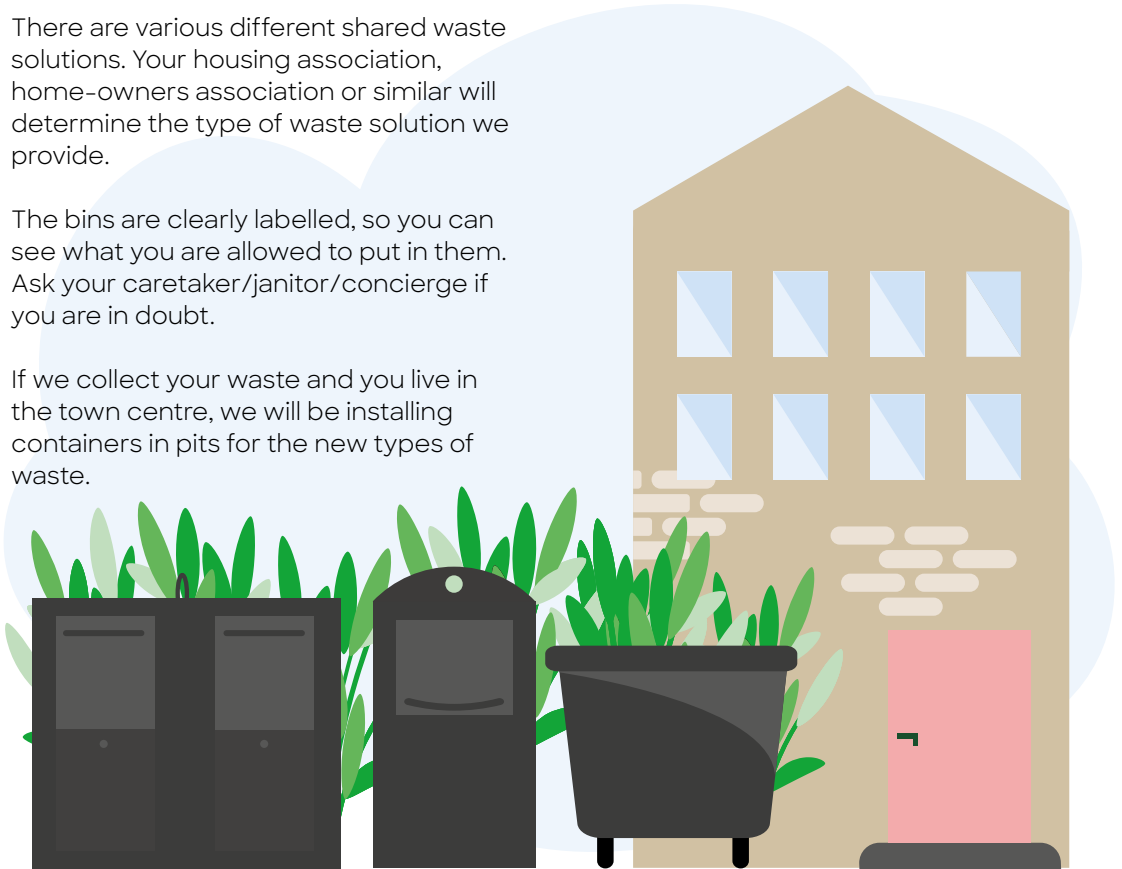


If you share your bins with others

There are various different shared waste solutions. Your housing association, home-owners association or similar will determine the type of waste solution we provide.

The bins are clearly labelled, so you can see what you are allowed to put in them. Ask your caretaker/janitor/concierge if you are in doubt.

If we collect your waste and you live in the town centre, we will be installing containers in pits for the new types of waste.



Disposing of your hazardous waste

If you already have a hazardous waste collection scheme, you should continue using it.

A new scheme will be introduced during 2024 where everybody will be able to hand in their hazardous waste at a collection point near their home.



Opening hours:

Monday - Friday: 7-18

Saturday, Sunday and Public Holidays:
10-17

Closed: 24, 25, 26 and 31 December
and 1 January

Your recycling station – for the waste we don't collect

You can hand in your waste at the six recycling stations in Aarhus Municipality. We will then make sure that it is processed environmentally and sent off to be recycled. If you have any used items that others may still be able to enjoy, these can also be handed in for reuse at your recycling station.

Here are the addresses of our recycling stations

**Lisbjerg
recycling station**
Ølstedvej 70
8200 Aarhus N

**Risskov
recycling station**
Lystrupvej 190
8240 Risskov

**Brabrand
recycling station**
Sintrupvej 57
8220 Brabrand

**Viby
recycling station**
Eskelundvej 13
8260 Viby J

**Hasselager
recycling station**
Birkegårdsvej 8
8361 Hasselager

**Malling
recycling station**
Holmskovvej 66
8340 Malling

Do you want to hand something in for someone else to reuse?

Visit REUSE at
Jægergårdsgade 170,
Aarhus C

Daily from 12-17.
kredslob.dk/reuse

Pick things up or drop
them off at Bytteboxen

Find out where at
kredslob.dk/bytteboxen

You can also pick up
things that others have
left and reuse them

Making good space for sorting

The sorting process goes a lot more smoothly if you can make it as easy as possible for you (and the rest of the family) to follow. Fortunately, there are many presentable and practical solutions that will give you plenty of space now that you are sorting more waste than before, regardless of whether you live in a large or small home.

Four tips towards a good sorting system:

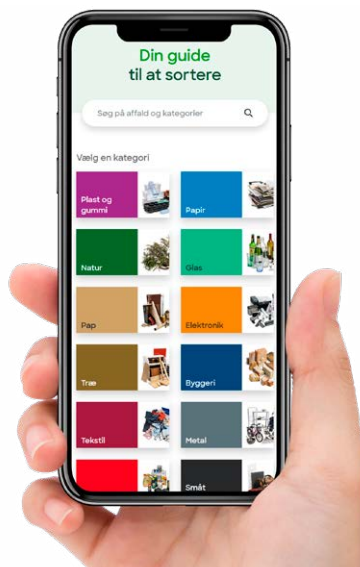
- Easy to fill and empty
- Have a clearly designated bag or basket for each type of waste
- Use something of an appropriate size
- Put them near to where your waste comes from

Find more planning tips at kredslob.dk/inspiration



Baskets are very useful when sorting. Put a sticker on each basket so you can see what kind of waste goes in each basket.

If you live in a small home, you could hang nets in your porch or behind a door. Using bags makes it easy to take your waste to the right bin when a collection is due.



Kredsløb

 /kredslob  @kredslob.dk

Do you still have questions?

If so, you can always look up your waste in the sorting guide at kredslob.dk/sorteringsguiden